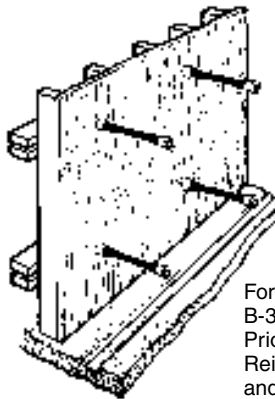
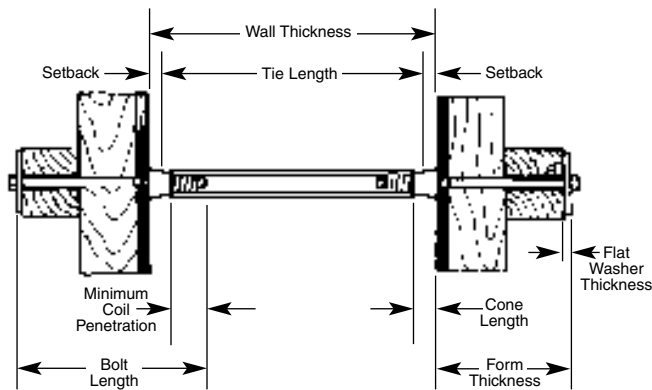
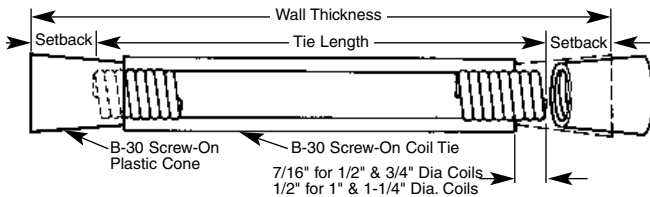


B-3 Screw-On Coil Tie

Dayton/Richmond Screw-On Coil Tie is designed with longer coils that extend beyond the end of the struts. Plastic cones screw onto the projections to provide a positive setback and act as a fixed internal form spreader.

To determine proper screw-on coil tie length, subtract the required total setback (both sides) from the wall thickness.



Form Panel Showing B-3 Coil Ties in Place Prior to Installation of Reinforcing Steel and Closure Form.

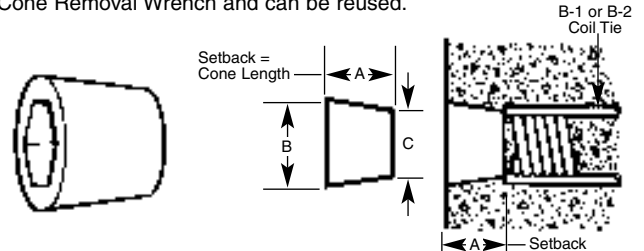
B-3 Screw-On Coil Tie Selection Chart

Type	Bolt Diameter	Number of Strut Wires	Safe Working Load Tension (lbs.)
B-3 Standard	1/2"	2	4,500
B-3 Heavy	1/2"	2	6,750
B-3 Standard	3/4"	2	6,750
B-3 Heavy	3/4"	2	9,000
B-3 Standard	1"	2	13,500
B-3 Standard	1"	4	18,000
B-3 Standard	1-1/4"	4	27,000

Approximate safety factor 2:1

B-29 Loose Plastic Cone

Dayton/Richmond B-29 Loose Plastic Cones are used with B-1 and B-2 Coil Ties. They are placed on the coil bolts after the coil bolts have been inserted through the form face but prior to threading the bolt into the coil tie. The large end of the cone provides sufficient bearing surface to prevent crushing of the plywood around the bolt hole. B-29 plastic cones are removed from the concrete with a B-15 Cone Removal Wrench and can be reused.



Warning: Cones are to be used for spreader action only and are not designed for scaffold bracket or other accessory loads.

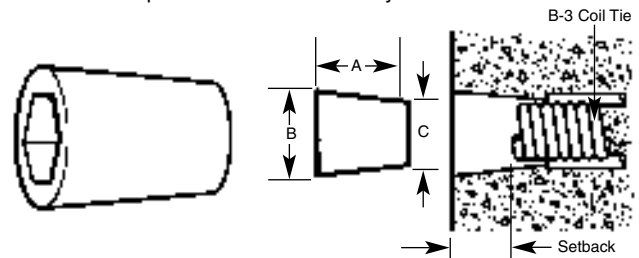
B-29 Loose Cone Selection Chart

Bolt Diameter	Setback (Cone Length) A	B	C
1/2"	1"	1-1/4"	1"
1/2"	1-1/2"	1-1/4"	1"
1/2"	2"	1-1/4"	1"
3/4"	1"	1-5/8"	1-7/16"
3/4"	1-1/2"	1-5/8"	1-7/16"
3/4"	2"	1-5/8"	1-7/16"
1"	1"	-	-
1"	2"	-	-
1"	2-1/2"	2-1/8"	1-3/4"
1-1/4"	2"	-	-
1-1/4"	2-1/2"	2-3/8"	2-1/8"

Approximate safety factor 2:1

B-30 Screw-On Plastic Cones

Dayton/Richmond Screw-On Plastic Cones are designed to thread onto the protruding coil of a B-3 Screw-On Coil Tie. Use a B-15 Cone Removal Wrench to back the cone off the tie and out of the concrete. B-30 plastic cones are normally reusable.



Warning: Cones are to be used for spreader action only and are not designed for scaffold bracket or other accessory loads.

B-30 Screw-On Selection Chart

Bolt Dia.	Setback	A	B	C
1/2"	1"	1-3/8"	1-1/4"	1"
1/2"	1-1/2"	1-7/8"	1-1/4"	1"
1/2"	2"	2-3/8"	1-1/4"	1"
3/4"	1"	1-1/2"	1-5/8"	1-7/16"
3/4"	2"	2-1/2"	1-3/4"	1-7/16"
1"	2"	2-1/2"	2-1/8"	1-13/16"
1-1/4"	2"	2-1/2"	2-3/8"	2-1/8"

Approximate safety factor 2:1