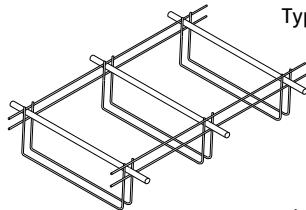


## Wire Baskets (without Dowels)

Dowel Baskets without dowels are available for contraction and expansion joints in slabs 4" to 9" thick. These are fabricated for 3/4", 1", or 1-1/4" diameter dowels as required.

Type "D" Contraction Baskets and K-5 Type "D" Expansion Baskets are a standard 10" width.

Note: Dowel Bars, Dowel Caps, Basket Clips, and Basket Stakes are sold separately.



Type "D" Expansion Basket

Type "D" Contraction Basket

