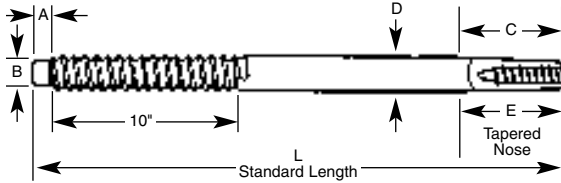
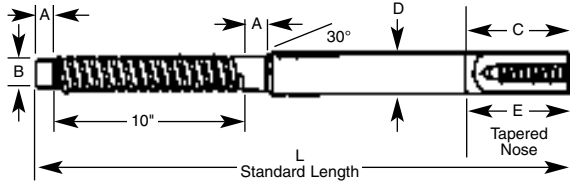


D-2 and D-30 She-Bolts

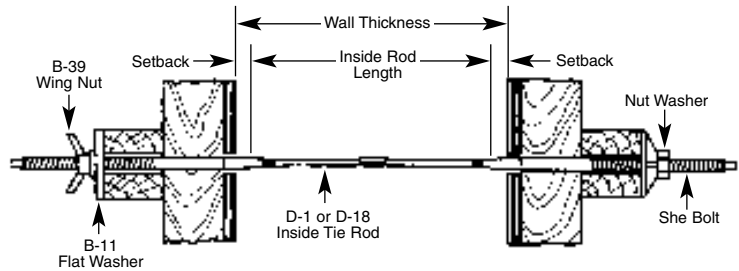


D-2, D-30 She-Bolt



D-30 High Strength She-Bolt

Dayton/Richmond D-2 and D-30 She-Bolts are heavy-duty, reusable form ties for medium and heavy concrete construction. The D-2 She-Bolt has a 3/4" diameter and is equipped with Acme thread. The D-30 She-Bolt has coil thread and is available in 3/4" through 1-5/8" diameters in 1/8" increments. She-Bolts are used in conjunction with D-1 or D-18 Inside Rods to form tie a wide range of formwork thicknesses.



D-2 and D-30 She-Bolt Selection Chart

Type	Safe Working Load Tension (lbs.)	She-Bolt External Thread		Inside Tie Rod Thread		A	B	C	D	E	L	External Hardware Required
		Diameter	Type	Diameter	Type							
D-2	9,000	3/4"	Acme	1/2"	NC	5/8"	1/2"	1-1/4"	3/4"	3"	20"	3/4" Dia. D-6
D-30	9,000	7/8"	Coil	1/2"	Coil	1"	1/2"	1-1/2"	7/8"	2-3/4"	18" 20" 24"	7/8" Dia B-27 or B-39
D-30	12,000	7/8"	Coil	5/8"	Coil	1"	1/2"	1-1/2"	7/8"	2-3/4"	18" 20" 24"	7/8" Dia. B-39
D-30	18,000	1-1/4"	Coil	3/4"	Coil	1"	3/4"	2"	1-1/4"	4"	20" 24" 30" 35"	1-1/4" Dia. B-39
D-30	37,500	1-1/2"	Coil	1"	Coil	1"	3/4"	2"	1-1/2"	4"	20" 24" 30" 35"	1-1/2" Dia. B-39
D-30 HS	56,000	1-1/2"	Coil	1-1/4"	Coil	1"	3/4"	2-3/4"	1-3/4"	4"	20" 24" 30" 35"	1-1/2" Dia. B-39

Note: She-bolts are meant to be reused, but they do wear so they must be continually inspected. When wear or damage is noted, they must be replaced. Approximate safety factor 2:1.

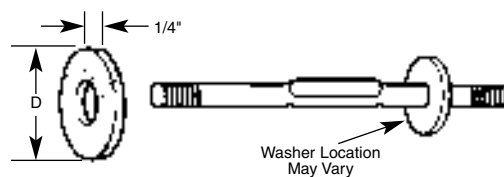
A water proof grease should be applied to the embedded portion of the she-bolt to facilitate removal.

Standard sizes are listed in the chart, other than standard sizes are available on special order.

Caution: The pitch (threads/inch) of the 3/4" diameter Acme thread varies in certain geographical areas of the United States, please check before ordering.

D-33 Waterseal Washer

Dayton/Richmond D-33 Waterseal Washers are neoprene washers used on D-1 Inside Rods to break the continuity of the tie to help eliminate water seepage along the tie. Generally specified when she-bolts are used to form water containment structures.



Inside Tie Rod Diameter	"D"
1/2"	1"
3/4"	1-1/2"
1"	1-1/2"